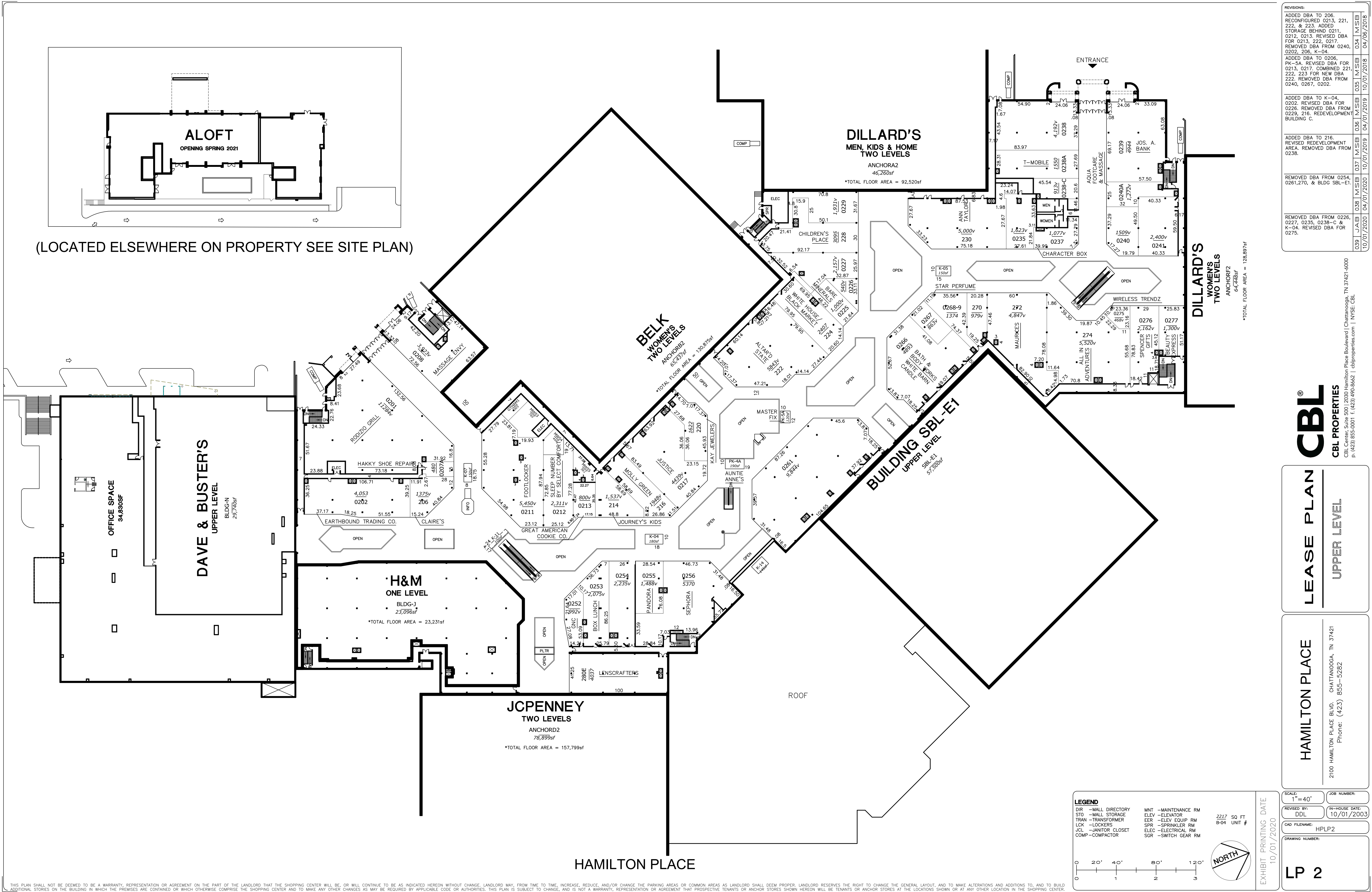


(LOCATED ELSEWHERE ON PROPERTY SEE SITE PLAN)



REVISIONS:

039	JAB	038	N/SB	037	M/SB	036	M/SB	035	M/SB	034	M/SB	04/08/2018
038	JAB	038	N/SB	037	M/SB	036	M/SB	035	M/SB	034	M/SB	10/01/2019
037	JAB	038	N/SB	037	M/SB	036	M/SB	035	M/SB	034	M/SB	10/01/2019
036	JAB	038	N/SB	037	M/SB	036	M/SB	035	M/SB	034	M/SB	10/01/2019
035	JAB	038	N/SB	037	M/SB	036	M/SB	035	M/SB	034	M/SB	10/01/2019
034	JAB	038	N/SB	037	M/SB	036	M/SB	035	M/SB	034	M/SB	10/01/2019
033	JAB	038	N/SB	037	M/SB	036	M/SB	035	M/SB	034	M/SB	10/01/2019
032	JAB	038	N/SB	037	M/SB	036	M/SB	035	M/SB	034	M/SB	10/01/2019
031	JAB	038	N/SB	037	M/SB	036	M/SB	035	M/SB	034	M/SB	10/01/2019
030	JAB	038	N/SB	037	M/SB	036	M/SB	035	M/SB	034	M/SB	10/01/2019
029	JAB	038	N/SB	037	M/SB	036	M/SB	035	M/SB	034	M/SB	10/01/2019
028	JAB	038	N/SB	037	M/SB	036	M/SB	035	M/SB	034	M/SB	10/01/2019
027	JAB	038	N/SB	037	M/SB	036	M/SB	035	M/SB	034	M/SB	10/01/2019
026	JAB	038	N/SB	037	M/SB	036	M/SB	035	M/SB	034	M/SB	10/01/2019
025	JAB	038	N/SB	037	M/SB	036	M/SB	035	M/SB	034	M/SB	10/01/2019
024	JAB	038	N/SB	037	M/SB	036	M/SB	035	M/SB	034	M/SB	10/01/2019
023	JAB	038	N/SB	037	M/SB	036	M/SB	035	M/SB	034	M/SB	10/01/2019
022	JAB	038	N/SB	037	M/SB	036	M/SB	035	M/SB	034	M/SB	10/01/2019
021	JAB	038	N/SB	037	M/SB	036	M/SB	035	M/SB	034	M/SB	10/01/2019
020	JAB	038	N/SB	037	M/SB	036	M/SB	035	M/SB	034	M/SB	10/01/2019
019	JAB	038	N/SB	037	M/SB	036	M/SB	035	M/SB	034	M/SB	10/01/2019
018	JAB	038	N/SB	037	M/SB	036	M/SB	035	M/SB	034	M/SB	10/01/2019
017	JAB	038	N/SB	037	M/SB	036	M/SB	035	M/SB	034	M/SB	10/01/2019
016	JAB	038	N/SB	037	M/SB	036	M/SB	035	M/SB	034	M/SB	10/01/2019
015	JAB	038	N/SB	037	M/SB	036	M/SB	035	M/SB	034	M/SB	10/01/2019
014	JAB	038	N/SB	037	M/SB	036	M/SB	035	M/SB	034	M/SB	10/01/2019
013	JAB	038	N/SB	037	M/SB	036	M/SB	035	M/SB	034	M/SB	10/01/2019
012	JAB	038	N/SB	037	M/SB	036	M/SB	035	M/SB	034	M/SB	10/01/2019
011	JAB	038	N/SB	037	M/SB	036	M/SB	035	M/SB	034	M/SB	10/01/2019
010	JAB	038	N/SB	037	M/SB	036	M/SB	035	M/SB	034	M/SB	10/01/2019
009	JAB	038	N/SB	037	M/SB	036	M/SB	035	M/SB	034	M/SB	10/01/2019
008	JAB	038	N/SB	037	M/SB	036	M/SB	035	M/SB	034	M/SB	10/01/2019
007	JAB	038	N/SB	037	M/SB	036	M/SB	035	M/SB	034	M/SB	10/01/2019
006	JAB	038	N/SB	037	M/SB	036	M/SB	035	M/SB	034	M/SB	10/01/2019
005	JAB	038	N/SB	037	M/SB	036	M/SB	035	M/SB	034	M/SB	10/01/2019
004	JAB	038	N/SB	037	M/SB	036	M/SB	035	M/SB	034	M/SB	10/01/2019
003	JAB	038	N/SB	037	M/SB	036	M/SB	035	M/SB	034	M/SB	10/01/2019
002	JAB	038	N/SB	037	M/SB	036	M/SB	035	M/SB	034	M/SB	10/01/2019
001	JAB	038	N/SB	037	M/SB	036	M/SB	035	M/SB	034	M/SB	10/01/2019

ADDED DBA TO 206. RECONFIGURED 0213, 221, 222, & 223. ADDED STORAGE BEHIND 0211. 0212, 0213, REVISED DBA FOR 0213, 222, 0217. REMOVED DBA FROM 0240, 0202, 206, K-04. ADDED DBA TO 0206. PK-5A, REVISED DBA FOR 0213, 0217, COMBINED 221, 222, 223 FOR NEW DBA 222. REMOVED DBA FROM 0240, 0267, 0202.

ADDED DBA TO 0206. PK-5A, REVISED DBA FOR 0213, 0217, COMBINED 221, 222, 223 FOR NEW DBA 222. REMOVED DBA FROM 0240, 0267, 0202.

ADDED DBA TO 216. REVISED REDEVELOPMENT AREA. REMOVED DBA FROM 0238.

REMOVED DBA FROM 0254, 0261, 270, & BLDG SBL-E1.

REMOVED DBA FROM 0226, 0227, 0235, 0238-C & K-04. REVISED DBA FOR 0275.

CBL
CBL PROPERTIES
CBL Center, Suite 500 | 2030 Hamilton Place Boulevard | Chattanooga, TN 37421-6000
P: (423) 855-0001 | F: (423) 490-8662 | cblproperties.com | NYSE: CBL

LEASE PLAN
UPPER LEVEL

HAMILTON PLACE
2100 HAMILTON PLACE BLVD. CHATTANOOGA, TN 37421
Phone: (423) 855-5282

LEGEND
 DIR - MALL DIRECTORY
 STO - MALL STORAGE
 TRAN - TRANSFORMER
 LCK - LOCKERS
 JCL - JANITOR CLOSET
 COMP - COMPACTOR
 MNT - MAINTENANCE RM
 ELEV - ELEVATOR
 EER - ELEV EQUIP RM
 SPR - SPRINKLER RM
 ELEC - ELECTRICAL RM
 SGR - SWITCH GEAR RM

2217 SQ FT
B-04 UNIT #

SCALE: 1" = 40'

REVISED BY: DDL
10/01/2003

CAD FILENAME: HPLP2

DRAWING NUMBER: LP 2

EXHIBIT PRINTING DATE: 10/01/2020

0 20' 40' 80' 120'

NORTH

THIS PLAN SHALL NOT BE DEEMED TO BE A WARRANTY, REPRESENTATION OR AGREEMENT ON THE PART OF THE LANDLORD THAT THE SHOPPING CENTER WILL BE, OR WILL CONTINUE TO BE AS INDICATED HEREON WITHOUT CHANGE. LANDLORD MAY, FROM TIME TO TIME, INCREASE, REDUCE, AND/OR CHANGE THE PARKING AREAS OR COMMON AREAS AS LANDLORD SHALL DEEM PROPER. LANDLORD RESERVES THE RIGHT TO CHANGE THE GENERAL LAYOUT, AND TO MAKE ALTERATIONS AND ADDITIONS TO, AND TO BUILD ADDITIONAL STORIES ON THE BUILDING IN WHICH THE PREMISES ARE CONTAINED OR WHICH OTHERWISE COMPRISE THE SHOPPING CENTER AND TO MAKE ANY OTHER CHANGES AS MAY BE REQUIRED BY APPLICABLE CODE OR AUTHORITIES. THIS PLAN IS SUBJECT TO CHANGE, AND IS NOT A WARRANTY, REPRESENTATION OR AGREEMENT THAT PROSPECTIVE TENANTS OR ANCHOR STORES SHOWN HEREON WILL BE TENANTS OR ANCHOR STORES AT THE LOCATIONS SHOWN OR AT ANY OTHER LOCATION IN THE SHOPPING CENTER.