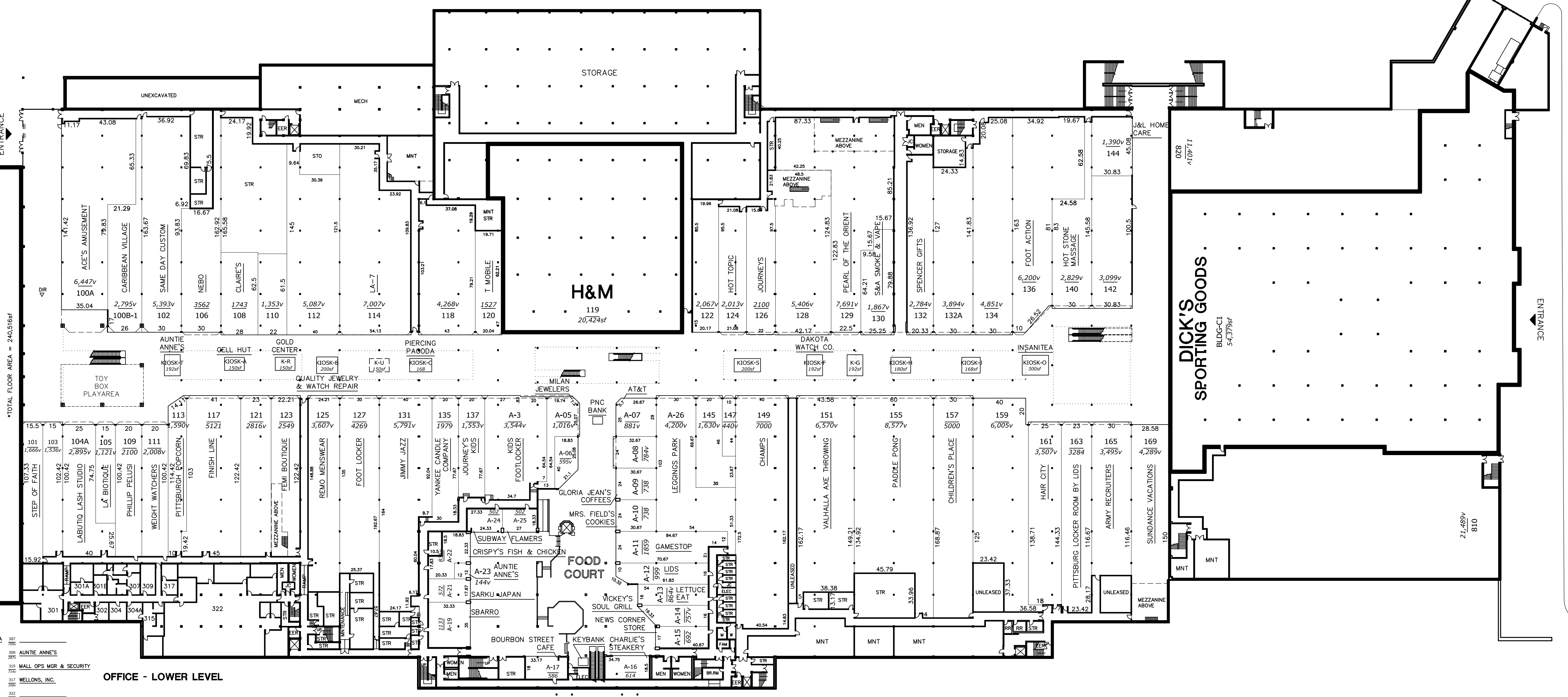
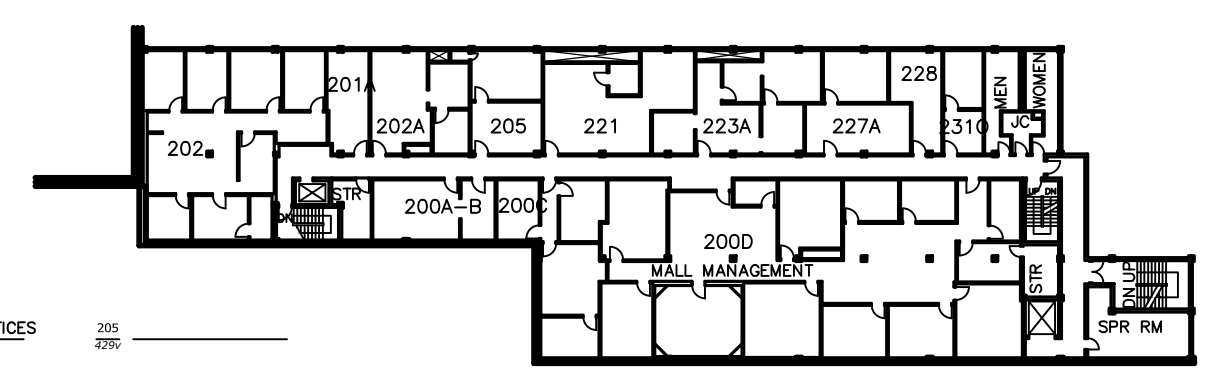


**MACY'S
THREE LEVELS**
400
60772sf



- 301 MARSHALL ADAMS MEDIA
- 302
- 303
- 304
- 305
- 306
- 307
- 308
- 309
- 310
- 311
- 312
- 313
- 314
- 315
- 316
- 317
- 318
- 319
- 320
- 321
- 322
- 323
- 324
- 325
- 326
- 327
- 328
- 329
- 330
- 331
- 332
- 333
- 334
- 335
- 336
- 337
- 338
- 339
- 340
- 341
- 342
- 343
- 344
- 345
- 346
- 347
- 348
- 349
- 350
- 351
- 352
- 353
- 354
- 355
- 356
- 357
- 358
- 359
- 360
- 361
- 362
- 363
- 364
- 365
- 366
- 367
- 368
- 369
- 370
- 371
- 372
- 373
- 374
- 375
- 376
- 377
- 378
- 379
- 380
- 381
- 382
- 383
- 384
- 385
- 386
- 387
- 388
- 389
- 390
- 391
- 392
- 393
- 394
- 395
- 396
- 397
- 398
- 399
- 400

OFFICE - LOWER LEVEL



OFFICE - MEZZANINE LEVEL

- 200-MALL MGMT OFFICES
- 201
- 202
- 203
- 204
- 205
- 206
- 207
- 208
- 209
- 210
- 211
- 212
- 213
- 214
- 215
- 216
- 217
- 218
- 219
- 220
- 221
- 222
- 223
- 224
- 225
- 226
- 227
- 228
- 229
- 230
- 231
- 232
- 233
- 234
- 235
- 236
- 237
- 238
- 239
- 240
- 241
- 242
- 243
- 244
- 245
- 246
- 247
- 248
- 249
- 250
- 251
- 252
- 253
- 254
- 255
- 256
- 257
- 258
- 259
- 260
- 261
- 262
- 263
- 264
- 265
- 266
- 267
- 268
- 269
- 270
- 271
- 272
- 273
- 274
- 275
- 276
- 277
- 278
- 279
- 280
- 281
- 282
- 283
- 284
- 285
- 286
- 287
- 288
- 289
- 290
- 291
- 292
- 293
- 294
- 295
- 296
- 297
- 298
- 299
- 300

MONROEVILLE MALL

REVISIONS:

ADDED DBA TO 101, REVISED DBA FOR A-05, REMOVED DBA FROM A-14.	0301	M/S/B	10/01/2018
REMOVED DBA FROM 104A, 112, 114, 128 & 155. ADDED DBA TO 100B-1, 121, A-07, A-14, A-28 & KIOSK-S.	0311	J/A/B	04/01/2019
REMOVED DBA FROM 142.	0321	J/A/B	10/01/2019
ADDED DBA TO 155, 114, 104A. REVISED DBA FOR 151, A-06, 102. REMOVED DBA FROM 121, 145, 144, & K-U.	0331	M/S/B	04/01/2020
REMOVED DBA FROM 103, 110, 118, 159, 122, A-06 & KIOSK-S. REVISED DBA FOR 120 & A-14. ADDED DBA TO 144.	0341	J/A/B	10/01/2020

CBL PROPERTIES
CBL Center, Suite 500 | 2030 Hamilton Place Boulevard | Chattanooga, TN 37421-6000
P: (423) 855-0001 | F: (423) 490-8662 | cblproperties.com | NYSE: CBL

LEASE PLAN
LOWER LEVEL

MONROEVILLE MALL
MALL MANAGEMENT OFFICE, STE 200, MONROEVILLE, PA 15146
PHONE: (412) 243-4800

LEGEND

DIR - MALL DIRECTORY	MNT - MAINTENANCE RM	2217 SQ FT
STO - MALL STORAGE	ELEV - ELEVATOR	B-04 UNIT #
TRAN - TRANSFORMER	EER - ELEV EQUIP RM	
LCK - LOCKERS	SPR - SPRINKLER RM	
JCL - JANITOR CLOSET	ELEC - ELECTRICAL RM	
COMP - COMPACTOR	SGR - SWITCH GEAR RM	

SCALE: 1" = 40'

REVISIONS:

REVISIONS:	DDI	10/01/2005
------------	-----	------------

CAD FILENAME: MOLP1

DRAWING NUMBER: LP 1

EXHIBIT PRINTING DATE: 10/01/2020

NORTH

THIS PLAN SHALL NOT BE DEEMED TO BE A WARRANTY, REPRESENTATION OR AGREEMENT ON THE PART OF THE LANDLORD THAT THE SHOPPING CENTER WILL BE, OR WILL CONTINUE TO BE AS INDICATED HEREON WITHOUT CHANGE. LANDLORD MAY, FROM TIME TO TIME, INCREASE, REDUCE, AND/OR CHANGE THE PARKING AREAS OR COMMON AREAS AS LANDLORD SHALL DEEM PROPER. LANDLORD RESERVES THE RIGHT TO CHANGE THE GENERAL LAYOUT, AND TO MAKE ALTERATIONS AND ADDITIONS TO, AND TO BUILD ADDITIONAL STORIES ON THE BUILDING IN WHICH THE PREMISES ARE CONTAINED OR WHICH OTHERWISE COMPRISE THE SHOPPING CENTER AND TO MAKE ANY OTHER CHANGES AS MAY BE REQUIRED BY APPLICABLE CODE OR AUTHORITIES. THIS PLAN IS SUBJECT TO CHANGE, AND IS NOT A WARRANTY, REPRESENTATION OR AGREEMENT THAT PROSPECTIVE TENANTS OR ANCHOR STORES SHOWN HEREON WILL BE TENANTS OR ANCHOR STORES AT THE LOCATIONS SHOWN OR AT ANY OTHER LOCATION IN THE SHOPPING CENTER.